

Standards • Modified Standards • Customs

Zero Backlash U-Joints - Instrument Quality
Single, Double, and Telescopic Types

ondrives.us

Precision Gears & Drive Components

ZERO BACKLASH UNIVERSAL JOINTS



- Up to 20° operating angle for zero backlash per joint. 20° to 60° operating angle for zero backlash per joint at 50% torque
- Up to 3600 RPM
- Bores from 3/16" to 1" and 5mm to 25mm
- Torques to 600 inch-lbs.

ondrives.us Corp.

☎ 516-771-6777

🌐 www.ondrives.us

3D 3D CAD Models Available

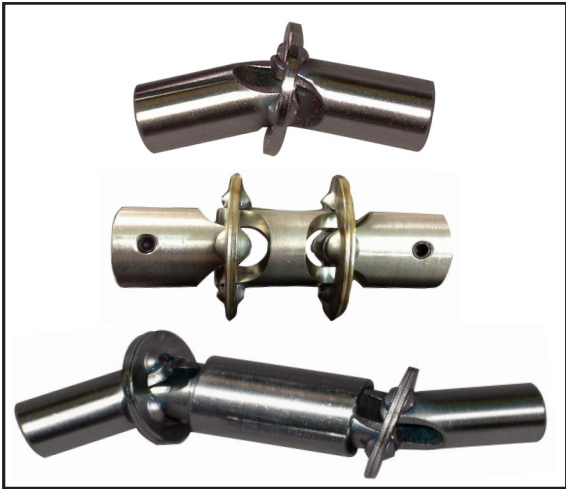
ZA
ZD
ZDT

COUPLINGS

Zero Backlash Universal Joints

Torques to 600 inch-lbs

ZA
ZD
ZDT



Materials

Body: 303 Stainless, 304 and 316 special order

Balls: Precision grade 440 Stainless

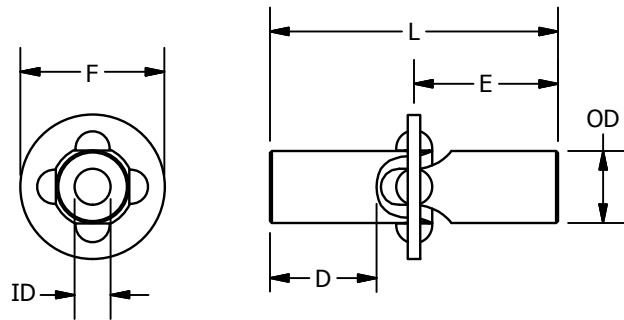
Lubrication: Sealed in solid film plus oil suspension

Temperature: 0 to 100° C (-40°C and other temperature ranges on request)

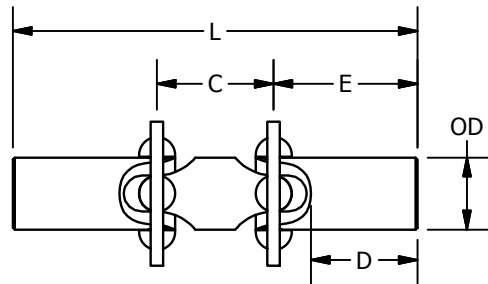
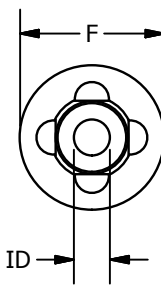
Torque rating: Conditions are for static in-line loading. Maximum load being one which causes the joint to yield.

Maximum RPM: 3600

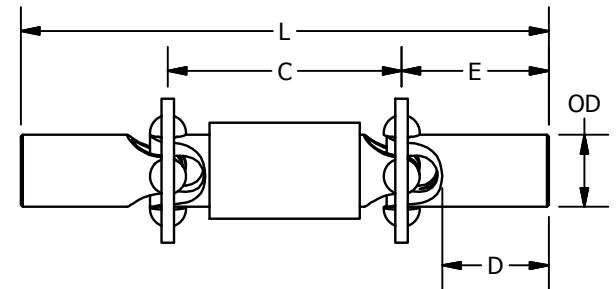
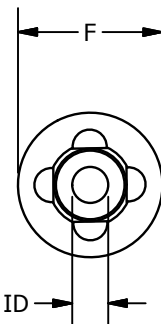
These unique zero backlash universal joints use precision balls, burnished custom spherical sockets and accurately sized components so when assembled an elastic preload will eliminate clearance between bearing surfaces.



Single



Double



Telescoping

All dimensions are in inches

Size Code	OD (in)	ID (+.001 / -.000)		D Depth of Bore	E End Unit	F Flange Dia.	Torque in-lbs
		Standard Bore Size	Optional Bore Size				
3	3/8	.1875	.250	3/8	3/4	3/4	16
4	1/2	.250	.3125	7/16	3/4	15/16	20
6	3/4	.375	.4375	5/8	1	1-3/8	30
8	1	.500	.625 .750	7/8	1-5/16	1-7/8	75
8B	1	.500	.625 .750	7/8	1-5/16	1-7/8	300
8C	1	.500	.625 .750	7/8	1-5/16	1-7/8	450
12	1-1/2	.750	1.000	1-1/2	2-1/4	2-1/2	600

ondrives.us

☎ 516-771-6777

🌐 www.ondrives.us

✉ sales@ondrives.us